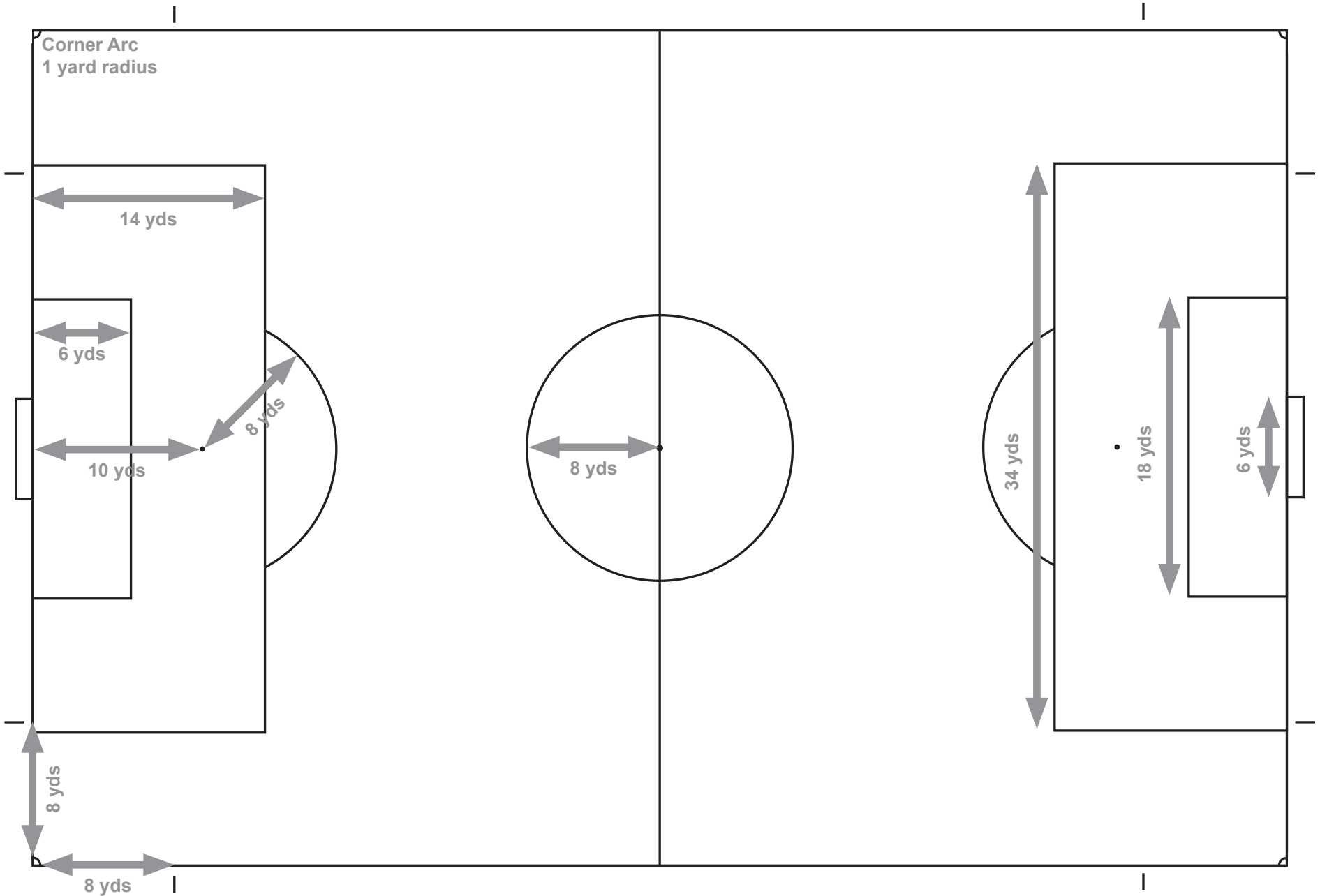


PROPOSED UNDER 12 FIELD MAXIMUM SIZES:

Length - 75 yards Width - 50 yards

Optional Lines lines are 8 yards from corner arc (9 yards from the corner)

Goal recommended size is 6'x18' (although 7'x21' will also be allowable.)

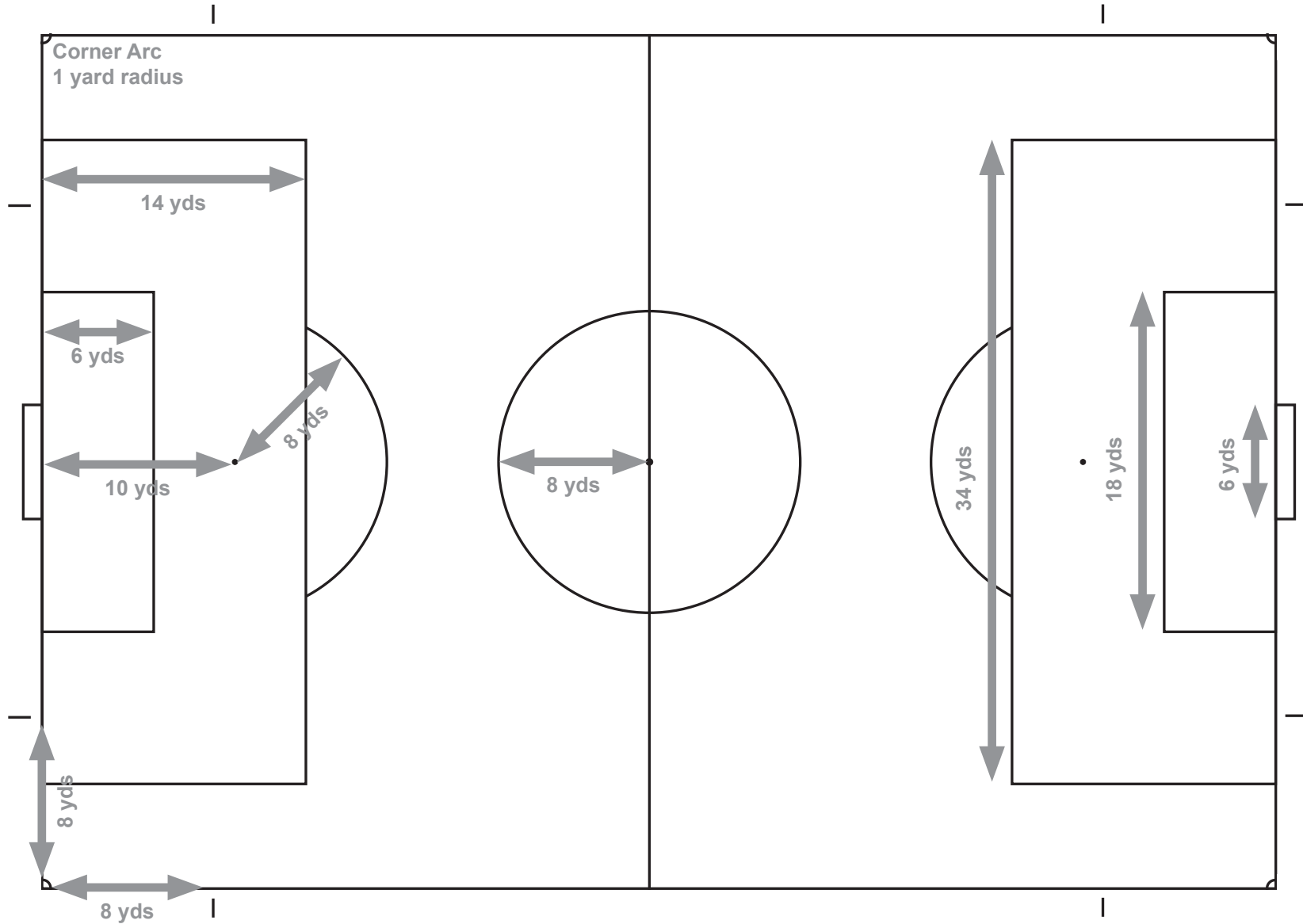


PROPOSED UNDER 12 FIELD MINIMUM SIZES:

Length - 65 yards Width - 45 yards

Optional Lines lines are 8 yards from corner arc (9 yards from the corner)

Goal recommended size is 6'x18' (although 7'x21' will also be allowable.)

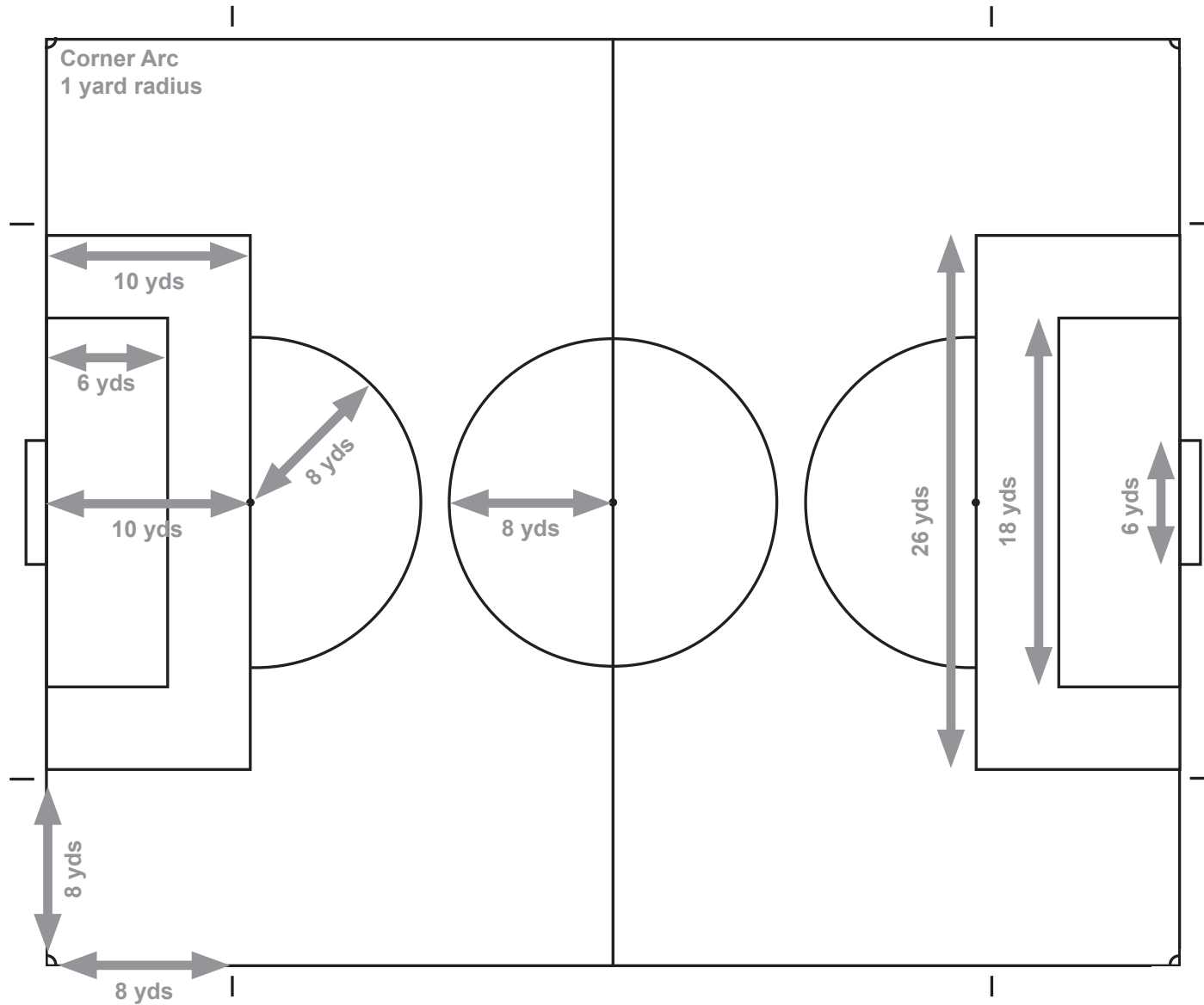


PROPOSED UNDER 10 FIELD MAXIMUM SIZES:

Length - 55 yards Width - 45 yards

Optional Lines lines are 8 yards from corner arc (9 yards from the corner).
Penalty Mark is centered on the penalty area line that is parallel to the goal line.

Goal size MUST BE 6'x18'



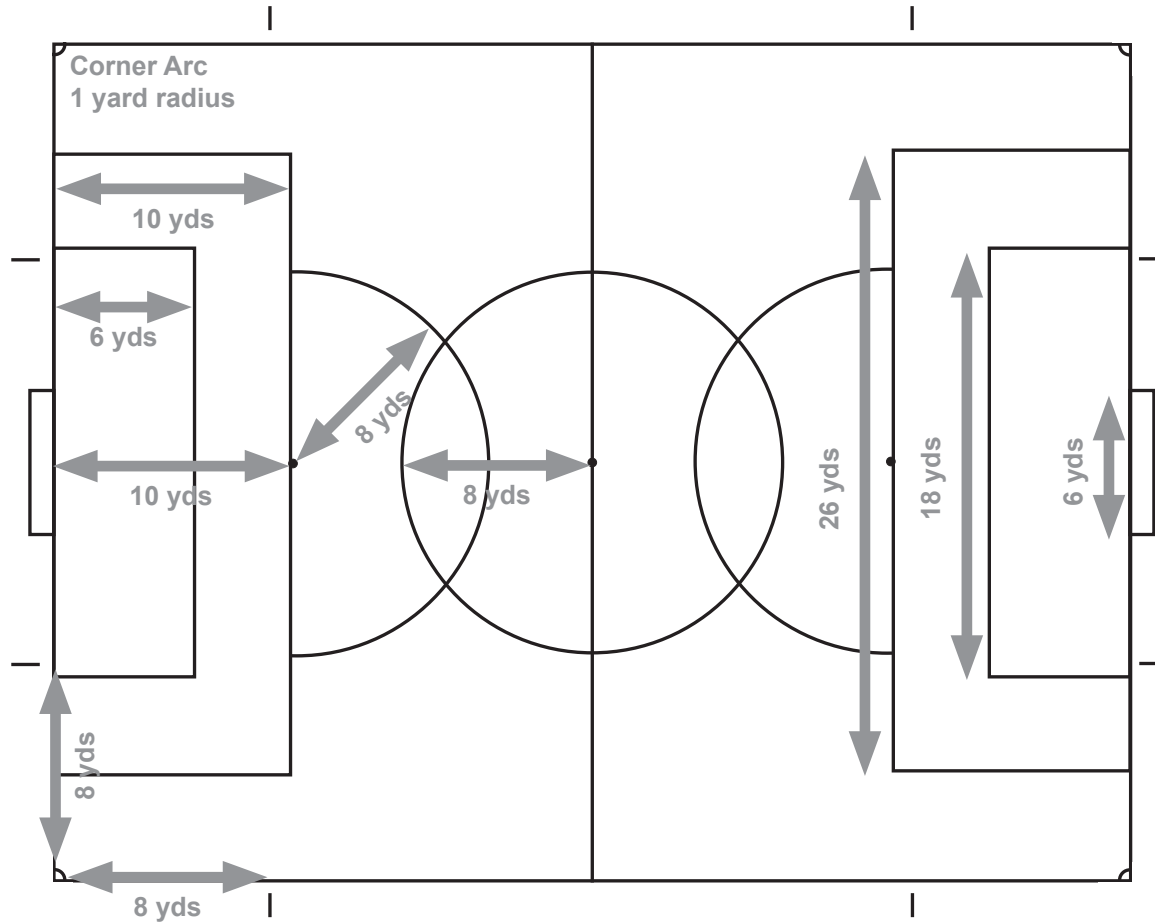
PROPOSED UNDER 10 FIELD MINIMUM SIZES:

Length - 45 yards Width - 35 yards

Optional Lines lines are 8 yards from corner arc (9 yards from the corner).

Penalty Mark is centered on the penalty area line that is parallel to the goal line.

Goal size MUST BE 6'x18'



NOTE:

The *ONLY* change to the minimum size of the Under 10 field is the relocation of the penalty mark to the penalty area line, 10 yards (instead of 8 yards) from the goal mouth.

This change alone is what is causing the center circle and the penalty arc to intersect.

Please note that the penalty arc has no purpose in soccer other than it's use in the execution of a penalty kick which is a rare occurrence in Under 10 games.